

NOT A TOUR, BUT A JOURNEY TO EMERGE INTO  
PORTUGUESE ARCHITECTURAL CULTURE.

ARCHI-  
TECTURE  
CURATED  
JOURNEY

AMAG PUBLISHER  
DUAS PORTAS

MARCH 8 -14  
BY MARC DUBOIS

# ABOUT US

ARCHI CUR is an architectural visit conceived by AMAG PUBLISHER and DUAS PORTAS, as an immersive and author-driven experience. Guided by internationally recognized architects, each session offers a critical, intimate, and deeply informed perspective on selected works. Each visit transcends the conventional guided-tour format: it becomes a moment of intellectual exchange, dialogue, and discovery, in which architecture is interpreted in the presence of those who know it, practice it, and think it with rigor and accuracy.

As co-curator of the Europolis 1991 architecture exhibition in Brussels, Marc Dubois, architect HON FRIBA, became increasingly fascinated by the architectural culture of Portugal, and particularly by developments in Porto. He has published several books and texts focusing on Porto. A guide that aims to be more than simply providing explanations of individual buildings, it offers an immersive and author-driven experience.

AMAG publisher is an international publishing house based in Portugal, that conceptualizes, develops and carefully publishes books and products related to architecture and design. As an architectural publisher, AMAG acknowledges the obligation to share and promote architecture not only through its magazine and books, but also, and simultaneously, through complementary activities and initiatives that are associated with it.

Duas Portas is more than a traditional lodge; it is a charming guesthouse with a limited number of accommodations. Located at the mouth of the Douro River, between the historic city of Porto and Foz. The historic building has been meticulously renovated by architect Luisa Penha. Duas Portas was published in 2025 by AMAG PUBLISHER in the LONG BOOKS COLLECTION being the 38 title.

Together, AMAG, Duas Portas, and Marc Dubois invite you to explore Porto not just as visitors, but as participants in a shared journey, discovering the city through the eyes of those who know it best.



from left to right Marc Dubois, AMAG team  
and Luísa Moura from Duas Portas

# WELCOME TO PORTO

Welcome to Porto, a city shaped by time, terrain, and continuity. Founded on the steep granite banks of the Douro River, where the river opens toward the Atlantic, Porto is a place where architecture is not an isolated object but a lived condition. Its hills, valleys, and terraces have given rise to a distinctive urban fabric of narrow streets, stepped alleys, and dramatic viewpoints, where topography defines both movement and settlement.

Originally a Roman and later medieval trading hub, Porto's historic center grew organically, constrained by the river, the port, and the surrounding landscape. Over centuries, the city expanded gradually, absorbing neighboring towns and adapting to modern life while preserving a dense, layered architectural identity. From intimate domestic quarters and artisan neighborhoods to public buildings, markets, and bridges spanning the rugged terrain, Porto reveals an architecture deeply rooted in place.

Porto's architectural culture is built upon dialogue: between tradition and modernity, craftsmanship

and innovation, permanence and adaptation. Historic monasteries and markets coexist with modernist institutions and contemporary landmarks, united by a persistent concern for scale, materiality, and human experience. Architecture here does not seek monumentality for its own sake; it emerges from context, necessity, and intellectual rigor.

This curated journey proposes an attentive reading of the city through its architecture. Moving across neighborhoods, landscapes, and periods, it uncovers both iconic works and lesser-known buildings that together articulate a broader narrative of Portuguese architecture. Guided by an author-driven perspective, participants are invited to engage with Porto beyond observation to reflect, discuss, and inhabit its spaces.

Through this architectural journey, Porto is revealed not simply as a destination, but as a continuous process: a city constructed through time, thought, and collective memory.



Overview of Monte da Lapa by Álvaro Siza, in construction

©Pedro Cardigo



# THE EXPERIENCE & WHAT TO EXPECT

This is not a conventional architectural tour, but a shared experience shaped by presence, dialogue, and attentive observation. Throughout the journey, participants are invited to slow down, to look closely, and to engage with architecture as a cultural practice rooted in place and lived experience.

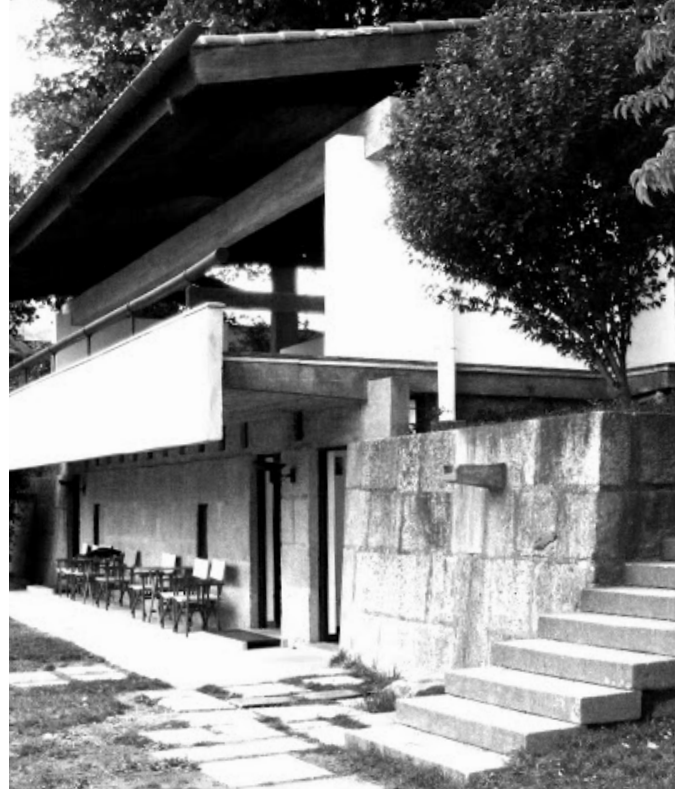
Walking together through buildings, landscapes, and public spaces, this experience fosters meaningful connections — between participants, architects, and the city itself. Conversations unfold naturally, bridging professional backgrounds, personal perspectives, and architectural knowledge. Architecture becomes a common language, opening space for exchange, reflection, and discovery.

Guided by an author-driven curatorial vision, each visit offers insight beyond form and function, revealing the ideas, intentions, and contexts that shape Porto's architectural culture. From iconic works to more intimate and lesser-known projects, the journey uncovers the richness, diversity, and quiet intelligence of architecture made in Porto.

What emerges is not only a deeper understanding of buildings, but a sense of belonging to a collective moment of learning. Through shared experiences and encounters, Porto reveals itself as a city where architecture is generous, thoughtful, and profoundly human.



Faculdade de economia do Porto by Viana de Lima, 1960



Quinta da Conceição by Fernando Távora, 1956



# CURATED JOURNEY PROGRAM OVERVIEW

sunday, march 8 - arrival day

Arrival in Porto and first encounters with the city.

monday, march 9 - first day

Exploring modern expansion and architecture shaped by the Atlantic landscape.

tuesday, march 10 - second day

Architecture between institutions, heritage, and continuity.

wednesday, march 11 - third day

Cultural landmarks and contemporary architectural expression.

thursday, march 12 - fourth day

Reading the historic city through its urban fabric and public spaces.

friday, march 13 - fifth day

Discovering the origins and early works of Álvaro Siza.

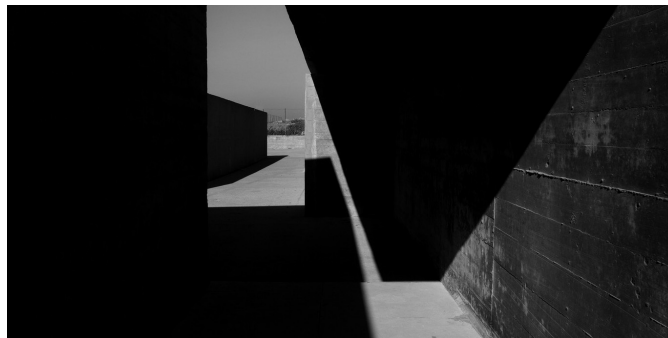
saturday, march 14 - departure day

Departure with time for reflection and closure of the journey.

## TRAVEL INFORMATION

please note that adjustments to the itinerary may occur

top to bottom and from left to right Piscina das Mares, Ala Siza by Álvaro Siza; Casa da Arquitetura by Guilherme Machado Vaz; Summer house by Viana de Lima; Matosinhos Market by Fortunato Cabral, Morais Soares and Cunha Leão; Parque do Rio Ofir by Júlio de Oliveira



# SUNDAY, MARCH 8

# ARRIVAL DAY

Arrival in Porto and first encounters with the city.

Upon arrival in Porto, participants will make their way at their own pace to Duas Portas, the intimate guesthouse that will serve as a base for the ArchiCur journey. Meticulously restored by architect Luisa Penha and now managed by her daughter Luisa Souto Moura, Duas Portas exemplifies thoughtful design: a harmony of historic character and contemporary sensibility, where every detail reflects care, elegance, and architectural rigor.

Take time to settle in and explore the guesthouse itself, from its serene courtyards and carefully curated interiors to the subtle interplay of light, material, and space that makes it a living example of architecture in practice.

For those arriving early, Duas Portas offers a welcoming environment to relax, enjoy a drink, or stroll along the riverfront nearby, easing into the rhythms of Porto before the journey begins in earnest.



Duas Portas by Luísa Penha, 2017

# MONDAY, MARCH 9

# FIRST DAY

Exploring modern expansion and architecture shaped by the Atlantic landscape.

The first day of ArchiCur takes us through northern Portugal's modernist treasures. From the elegant public spaces of Matosinhos to the understated brilliance of Siza's Vila do Conde bank, and the coastal summer houses that harmonize with landscape, this day offers a journey across time, scale, and typology. Participants will explore how architects of the 20th century interpreted tradition, modernity, and the Atlantic edge of Portugal, discovering both celebrated landmarks and hidden gems.

## HIGHLIGHTS

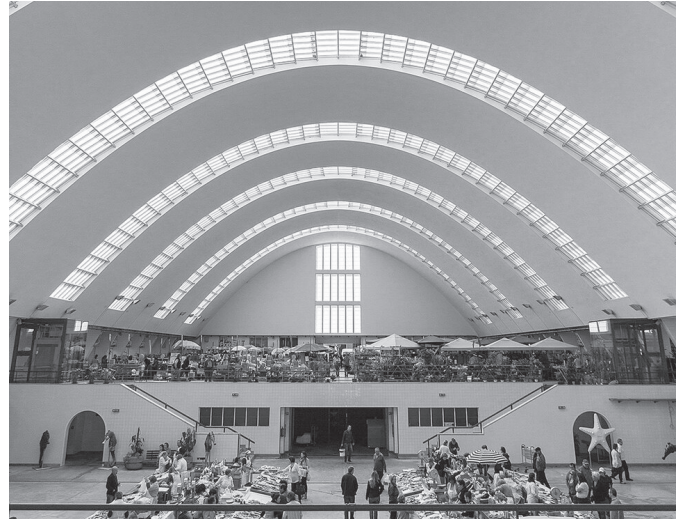
Matosinhos Municipal Market (1939–1952)  
Architects: Fortunato Cabral, Morais Soares, Cunha Leão, Matosinhos (AMAG OFFICE)

Vila do Conde Bank Branch (1978–1986)  
Architect: Álvaro Siza, Vila do Conde

Casa / Summer House Dr. Fernando Ribeiro da Silva (1956–1958)  
Architect: Fernando Távora, Ofir / Esposende

Parque do Rio Ofir Hotel (1962)  
Architect: Júlio De Oliveira, Ofir

Summer House (1954)  
Architect: Viana de Lima, Ofir / Esposende





# TUESDAY, MARCH 10

# SECOND DAY

Architecture between institutions, heritage, and continuity.

Day Two invites participants to explore how architecture mediates between history, institutional purpose, and contemporary expression. From the modernist clarity of the FEP building to the layered history of the Mosteiro de Leça do Balio, and finally to one of Álvaro Siza's most recent projects in Maia, the day traces a dialogue between past and present, continuity and innovation. This itinerary highlights the ways Portuguese architects respond to context, function, and cultural memory.

## HIGHLIGHTS

Mosteiro de Leça do Balio (2024)  
Original 14th-century Gothic with Romanesque elements; restoration and pavilion: Álvaro Siza, Leça do Balio

Fundação Gramaxo – Museum & Park (2024)  
Architect: Álvaro Siza (recent project), Maia

Faculdade de Economia da Universidade do Porto  
(early 1960s, renovated 2018)  
Architect: Viana de Lima, Porto



Cultural landmarks and contemporary architectural expression.

Day Three focuses on the intersection of architecture and cultural life in Porto. Starting with FAUP, Siza's iconic architecture school, the day explores how educational, cultural, and public buildings shape the city's contemporary identity. Visits to Serralves Museum and Park, with its Siza Wing and exhibition by Aires Mateus, and to Casa da Música by OMA/Rem Koolhaas, reveal Porto's architectural dialogue with modernity, innovation, and public engagement. The day concludes with the vibrant Mercado do Bom Sucesso, where architecture, commerce, and everyday life intersect.

## HIGHLIGHTS

FAUP – Faculdade de Arquitectura da Universidade do Porto (1993)

Architect: Álvaro Siza, Porto

Serralves Museum and Park (1999)

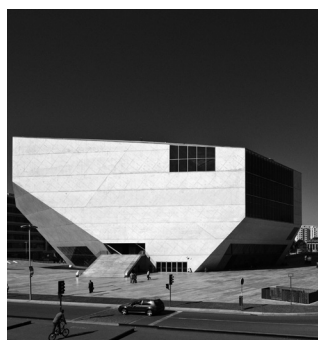
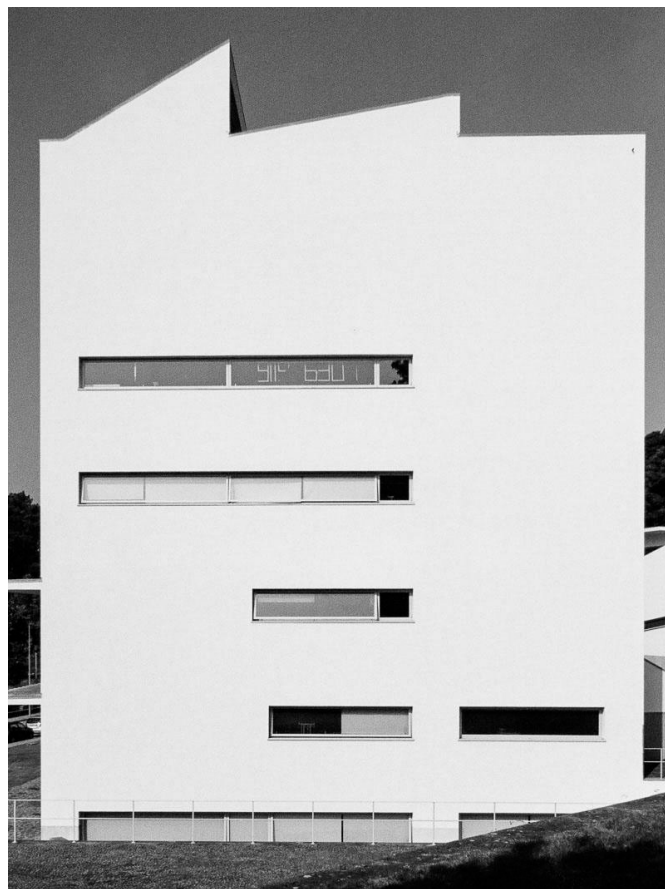
Architect: Álvaro Siza (Siza Wing extension),  
Exhibition by Aires Mateus, Porto

Casa da Música (1999)

Architect: OMA / Rem Koolhaas, Porto

Mercado do Bom Sucesso (1952)

Architect: Fortunato Leal, Cunha Leão, and Morais Soares, Porto



# THURSDAY, MARCH 12

# FOURTH DAY

Reading the historic city through its urban fabric and public spaces.

Day Four immerses participants in the historic heart of Porto, revealing how architecture shapes the city's urban fabric and public life. Through a guided exploration of streets, squares, and metro stations designed by Eduardo Souto de Moura, the day uncovers the dialogue between tradition and modernity, showing how contemporary interventions coexist with heritage buildings. Iconic civic and cultural landmarks, including markets, cinemas, and theatres, illustrate Porto's architectural continuity and vitality.

## HIGHLIGHTS

Metro Stations (dates vary)

Architect: Eduardo Souto de Moura, Porto, including Trindade and São Bento

Mercado do Bolhão (1914, renovated 2022)

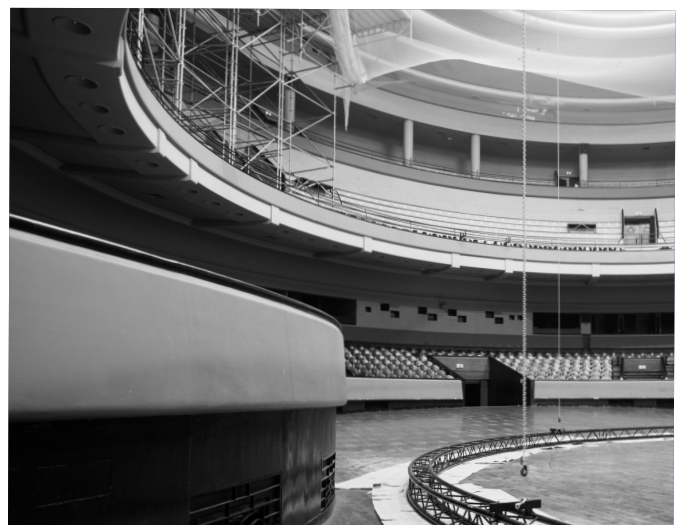
Architect: António Correia da Silva / historical building, Porto

Cinema Batalha (1947, and renovated 2019)

Architect: Arthur Andrade / historical building, Porto

Coliseu do Porto (1941, renovated 2024)

Architect: Cassiano Branco / historical building, Porto





# FRIDAY, MARCH 13

# FIFTH DAY

Discovering the origins and early works of Álvaro Siza.

Day Five offers an intimate exploration of Álvaro Siza's early works in Matosinhos, the Porto suburb where he was born. Participants will discover how Siza's approach to domestic architecture, scale, and context laid the foundations for his later masterpieces. The day also includes visits to civic buildings, iconic seaside architecture, and coastal landscapes, culminating in an exceptional experience at Casa de Chá da Boa Nova, overlooking the Atlantic. This itinerary reveals the dialogue between early modernism, local tradition, and the sensibility that defines Portuguese architecture.

## HIGHLIGHTS

The Young Siza: Early Houses (1954–1957)  
Architect: Álvaro Siza, Matosinhos

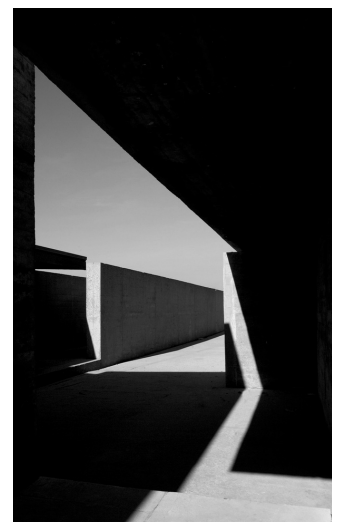
Parish Centre / Salão Paroquial (1956–1959)  
Architect: Álvaro Siza, Matosinhos

Matosinhos Town Hall (1981–1984)  
Architect: Alcino Soutinho, Matosinhos

Casa de Chá da Boa Nova (1959)  
Architect: Álvaro Siza, Leça da Palmeira

Piscina de Marés (1961–1966)  
Architect: Álvaro Siza, Leça da Palmeira

Casa da Arquitectura or Casa dos Pais (1961)  
Architect: Álvaro Siza, Matosinhos



# SATURDAY, MARCH 14

# DEPARTURE DAY

Departure with time for reflection and closure of the journey.

As the ARCHI CUR journey comes to an end, we hope participants leave Porto with a deeper understanding of its architectural culture, a sense of connection to the city, and lasting memories of shared discoveries. From iconic landmarks to hidden gems, this week has offered a dialogue between tradition and innovation, landscape and design, and between people and architecture.

We look forward to welcoming you on future editions of ARCHI CUR, continuing the exploration, conversation, and celebration of Portuguese architecture together.

# TRAVEL INFORMATION

## TRAVEL DATES

Sunday, March 8, 2026 – Morning arrival in Porto  
(departure from points of origin to Porto)

Saturday, March 14, 2026 – Departure from Porto

## PACKAGE PRICE (EXCLUDING FLIGHTS)

Double Room

€2,500.00 (early bird price until 31<sup>th</sup> of January)

€3,000.00 (regular price from 1<sup>st</sup> of February  
until 18<sup>th</sup> of March)

Includes full accommodation in a shared room and  
breakfast, local transportation, and entrance tickets

Single Room

€3,500.00 (early bird price until 31<sup>th</sup> of January)

€4,000.00 (regular price from 1<sup>st</sup> of February  
until 18<sup>th</sup> of March)

Includes full accommodation in a single room and breakfast,  
local transportation, and entrance tickets

## WHAT'S INCLUDED

Full accommodation and breakfast

Local transportation throughout the programme

Entrance tickets to all scheduled visits

## NOT INCLUDED

Flights for arrival and departure to Porto

Daily lunch and dinner

## GROUP SIZE

Limited to 6 to 12 participants, ensuring an intimate

and author-driven experience

## ACCOMMODATION

You will stay at Duas Portas Guesthouse.

Located at Rua Duas Portas 47, 4050-389 Porto, Portugal, at the mouth of the Douro River between Porto's historic center and Foz, Duas Portas offers an intimate and serene atmosphere. Elegant rooms, peaceful courtyards, and thoughtfully designed interiors make it the perfect base to explore the city.

Full breakfast with local flavors is included, and the riverfront, restaurants, and cultural landmarks are just a short walk away.

## ORGANIZERS

AMAG Publisher – International publishing house based in Portugal, dedicated to architecture and design. AMAG develops and publishes books, magazines, and architectural projects, and organizes curated experiences like ArchiCur to engage deeply with architectural culture.

Website: <https://www.amagpublisher.com>

Duas Portas – An intimate guesthouse meticulously restored by architect Luisa Penha and managed by her daughter Luisa. Duas Portas combines historic character with contemporary design, providing a calm and inspiring base for the ArchiCur journey.

Website: <https://www.duasportas.com>

## REGISTRATION

Reservations and further details are available via the AMAG Publisher website: <https://www.amagpublisher.com/product-page/archicur>